



1944. Estación Alpina de Biología of the Museo Nacional de Ciencias Naturales, 5500 feet alt., in the Sierra de Guadarrama, above Cercedilla, Madrid, Spain.
April 29, 1930.



1945. Estación Alpina de Biología of the Museo Nacional de Ciencias Naturales, 5500 feet alt., in the Sierra de Guadarrama, above Cercedilla, Madrid, Spain.
April 29, 1930.



1946. Estación Alpina de Biología of the Museo Nacional de Ciencias Naturales, 5500 feet alt., in the Sierra de Guadarrama, above Cercedilla, Madrid, Spain.
April 29, 1930.



1948. Museo Nacional de Ciencias,
Naturales, Madrid, Spain.
April 30, 1930.



1949. Entrance to Museo
Nacional de Ciencias Naturales,
Madrid, Spain.
April 30, 1930.



1950. Slopes above Puente
de los Fierros, Oviedo, Spain.
3000 feet.
May 3, 1930.



1951. Near Puente de los
Fierros, Oviedo, Spain.
May 3, 1930.



1952. Near Puente de los
Fierros, Oviedo, Spain.
May 3, 1930.

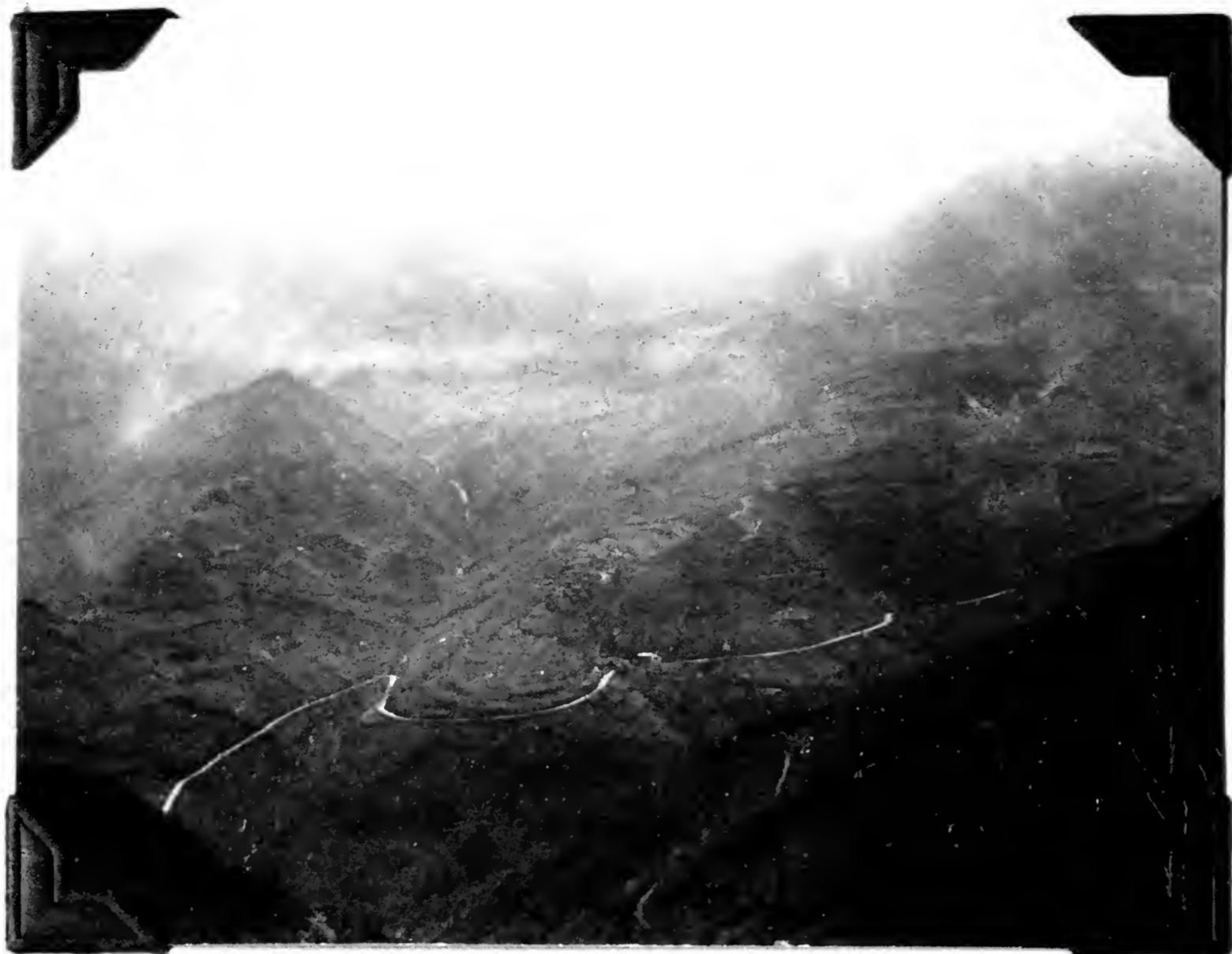
1953. Near Puente de los
Fierros, Oviedo, Spain.
May 3, 1930.



1954. Near Puente de los
Fierros, Oviedo, Spain.
May 3, 1930.



1955. David Chase of Pasadena, Calif.
Near Puente de los Fierros, Oviedo, Spain.
May 3, 1930.



1956. Near Puente de los
Fierros, Oviedo, Spain.
May 3, 1930.



1957. Near Puente de los
Fierros, Oviedo, Spain.
May 3, 1930.



1958. Near Puente de los
Fierros, Oviedo, Spain.
May 3, 1930.

1959. Near Puente de los
Fierros, Oviedo, Spain.
May 3, 1930.



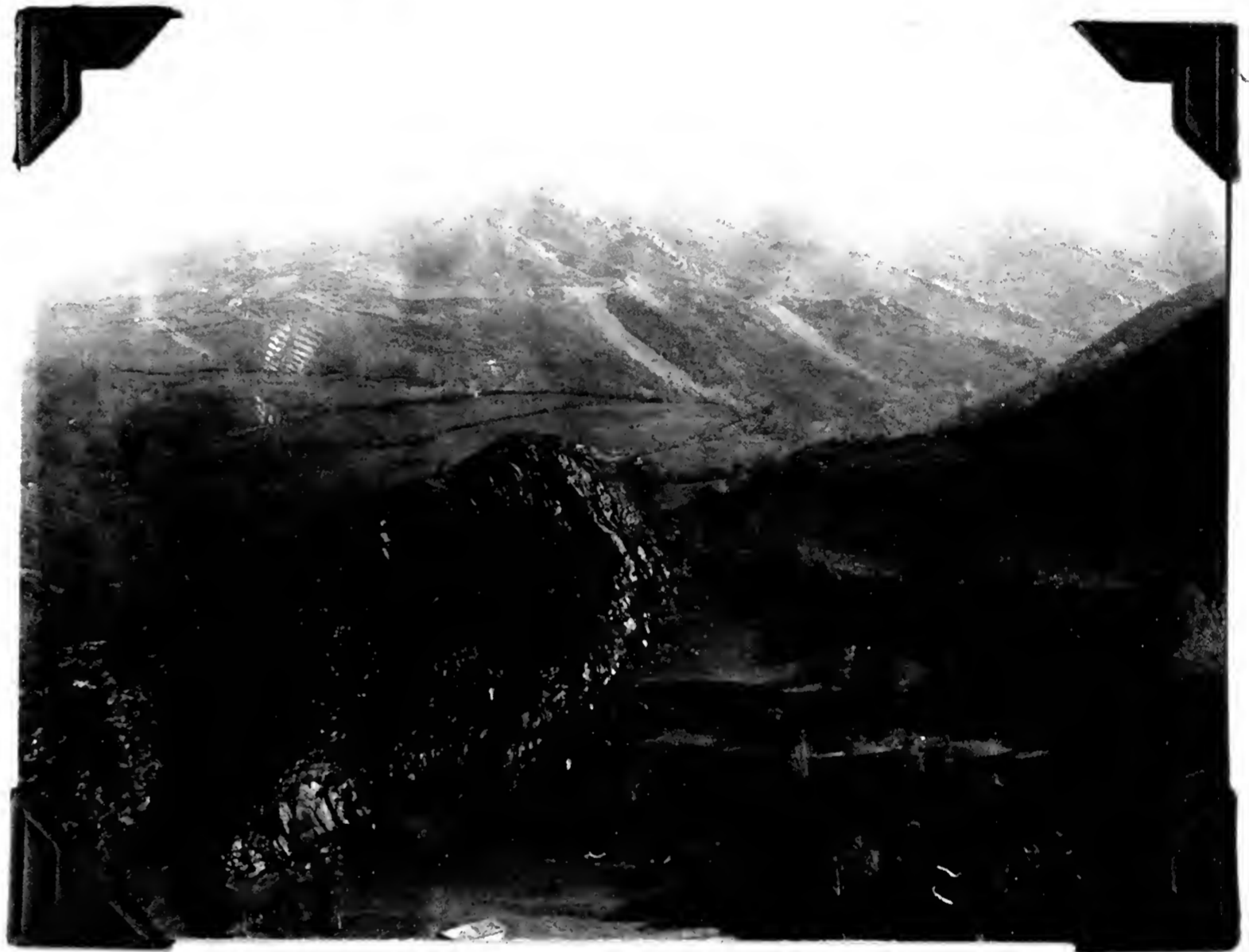
1960. View in Puente de los
Fierros, Oviedo, Spain.
May 3, 1930.

1961. Puente de los Fierros,
Oviedo, Spain.
May 3, 1930.





1962. View in Puente de los Fierros, Oviedo, Spain.
May 4, 1930.



1963. Hills near Puente de los Fierros, Oviedo, Spain.
May 4, 1930.



1964. Forest and stream near Puente de los Fierros, Oviedo, Spain.
May 4, 1930.

1965. Near Puente de los
Fierros, Oviedo, Spain.
May 4, 1930.



1966. Near Puente de los
Fierros, Oviedo, Spain.
May 4, 1930.

1967. Near Puente de los
Fierros, Oviedo, Spain.
May 4, 1930.





1968. Village of Villar de
Parana Oviedo, Spain.
May 5, 1920.



1969. Village of Villar
de Parana, Oviedo, Spain.
May 5, 1930.



1970. Village of Villar de
Parana, Oviedo, Spain.
May 5, 1930.

1971. Village of Villar de
Parana Oviedo, Spain.
May 5, 1930.



1972. Village of Villa de
Parana, Oviedo, Spain.
May 5, 1930.

1973. Near Puente de los
Fierros, Oviedo, Spain.
May 5, 1930.





1974. Near Puente de los
Fierros, Oviedo, Spain.
May 5, 1930.



1975. Near Puente de los
Fierros, Oviedo, Spain.
May 5, 1930.



1976. Pollarded tree, near Puente de
los Fierros, Oviedo, Spain.
May 5, 1930.

1977. Country barn and
pasture near Puente de los
Fierros, Oviedo, Spain.
May 5, 1930.



1978. Near Puente de los
Fierros, Oviedo, Spain. Note
Pollarded trees.
May 5, 1930.

1979. Near Busdongo, León, t
4500 feet altitude.
May 8, 1930.





1980. Near Busdongo, León,
4500 ft.
May 8, 1930.



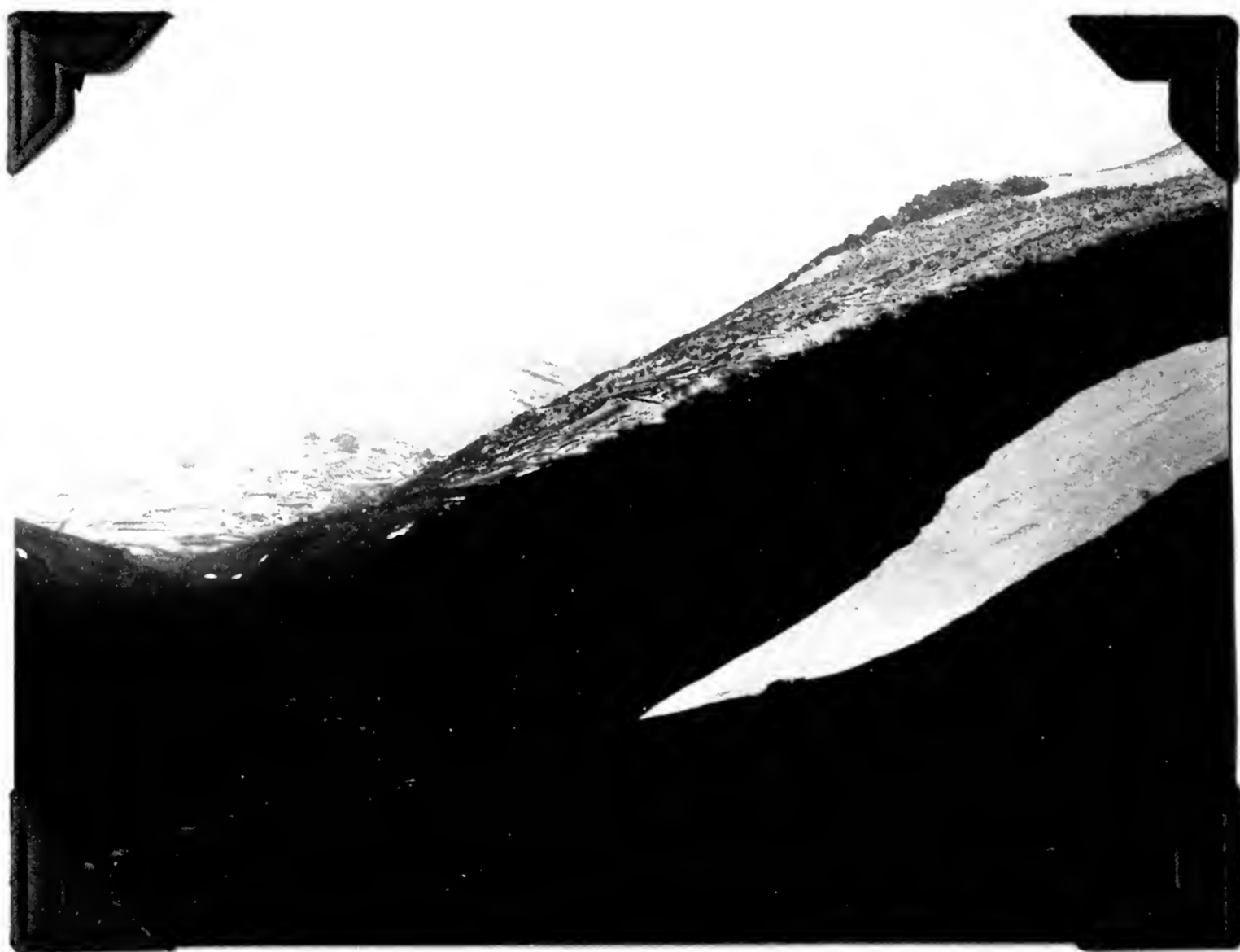
1981. Near Busdongo, León,
4500 feet.
May 8, 1930.



1982. Near Busdongo, León.
May 8, 1930.

1983. Near Busdongo, León, 4500
feet.

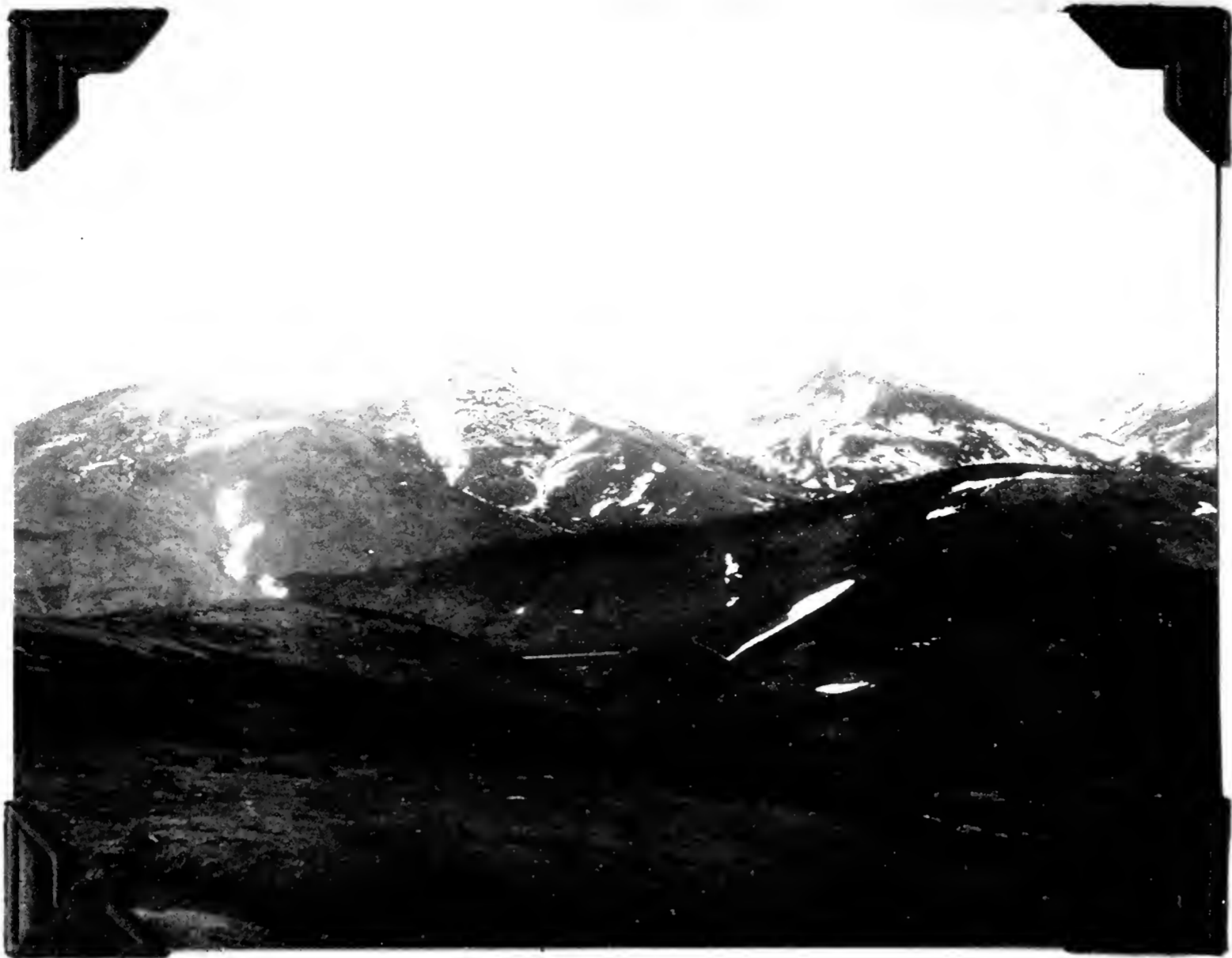
May 8, 1930.



1984. Near Busdongo, León.
May 8, 1930.

1985. Summit of the Puerto de
Pajáres, above Busdongo, León.
May 9, 1930.





1986. Summit of the Puerto de Pajáres, above Busdongo, León.
May 9, 1930.



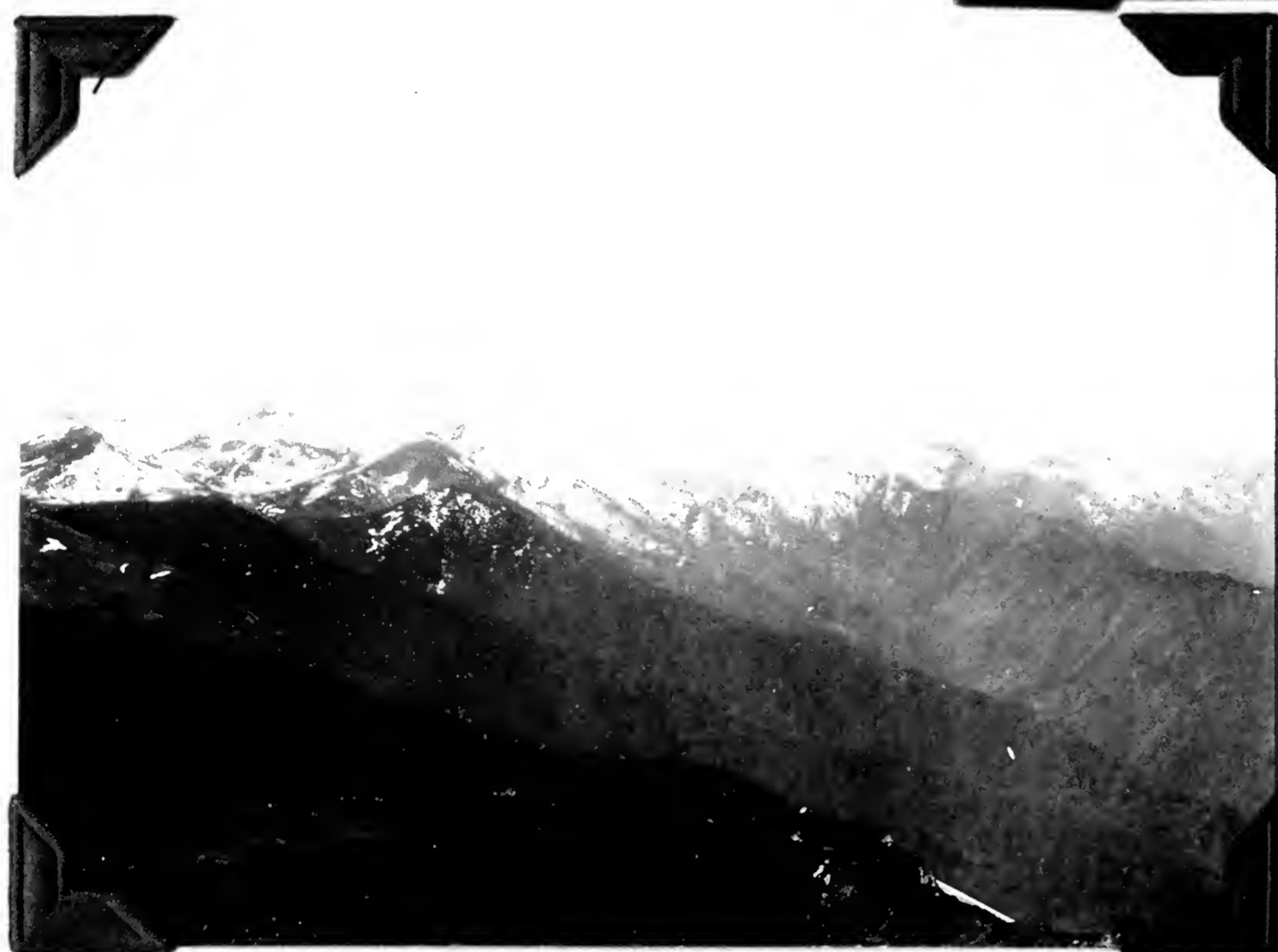
1987. Summit of the Puerto de Pajáres, above Busdongo, León.
May 9, 1930.



1988. View down the Puerto de Pajáres, above Busdongo, León.
May 9, 1930.

1989. View down the Puerto
de Pajáres, above Busdongo,
León.

May 9, 1930.



1990. View at Summit of Puerto
de Pajáres, above Busdongo, León.
May 9, 1930.

1991. Summit of the Puerto de
Pajáres, above Busdongo, León.
May 9, 1930.





1992. Summit of the Puerto de Pajáres, above Busdongo, León.
May 9, 1930.



1993. Summit of the Puerto de Pajáres, above Busdongo, León.

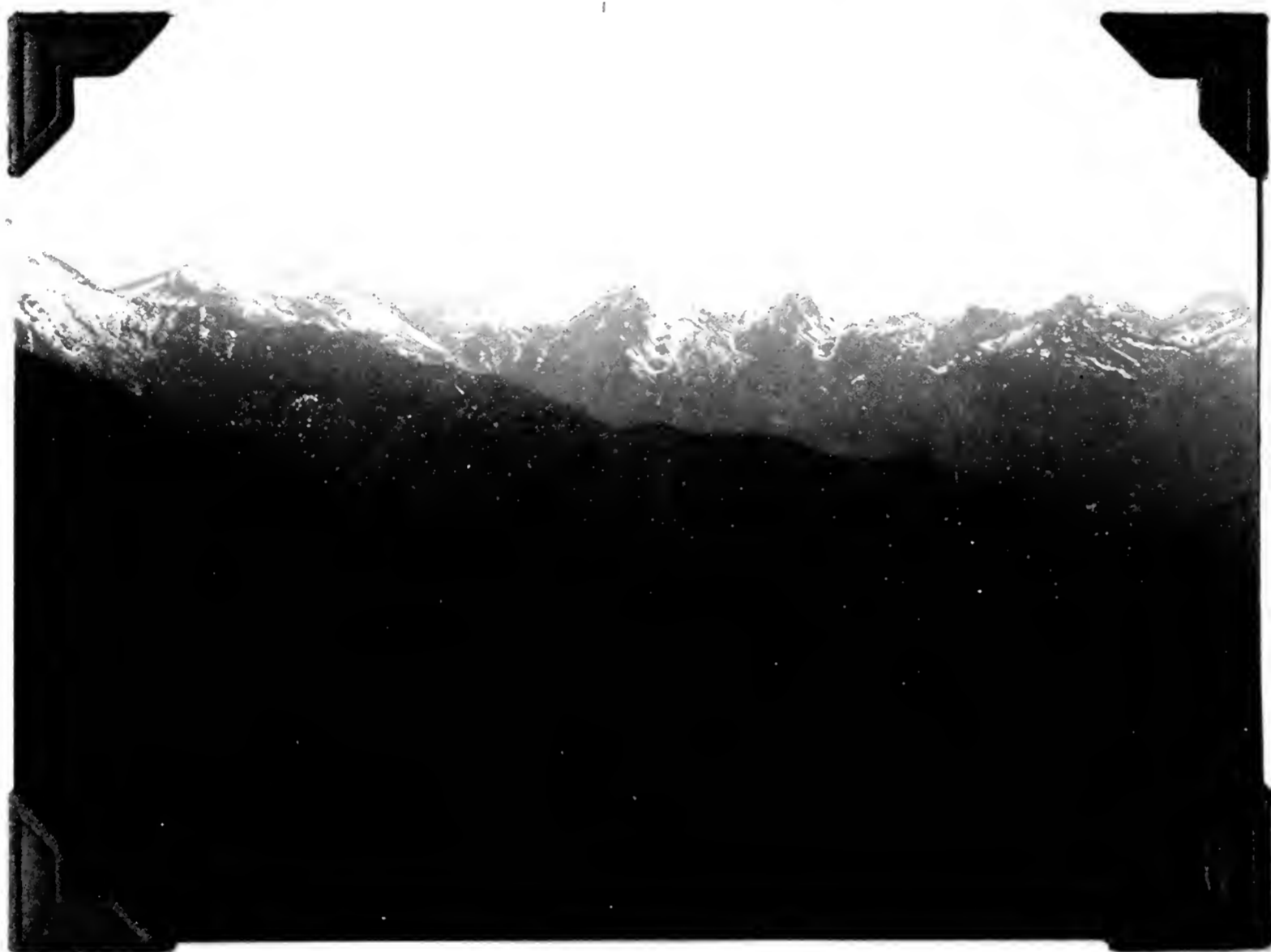
May 9, 1930.



1994. Summit of the Puerto de Pajáres, above Busdongo, León.

May 9, 1930.

1995. Hotel at the summit
of the Puerto de Pajáres, above
Busdongo, León.
May 9, 1930.



1996. In the Puerto de Pajáres
above Busdongo, León.
May 9, 1930.

1997. Old church at Arbas,
León.
May 9, 1930.





1998. Stone post set at side of highway as a marker to guide the traveler during the two meter snows of winter. Above Busdongo, León.

May 9, 1930.



1999. Below the summit of the Puerto de Pajáres, above Busdongo, León.

May 9, 1930.



2000. Outskirts of Busdongo, León.

May 9, 1930.

2001. Busdongo, León,
May 9, 1930.



2002. Busdongo, León.
May 9, 1930.

2003. Riaño, León, with
Río Esla in left foreground.
May 13, 1930.

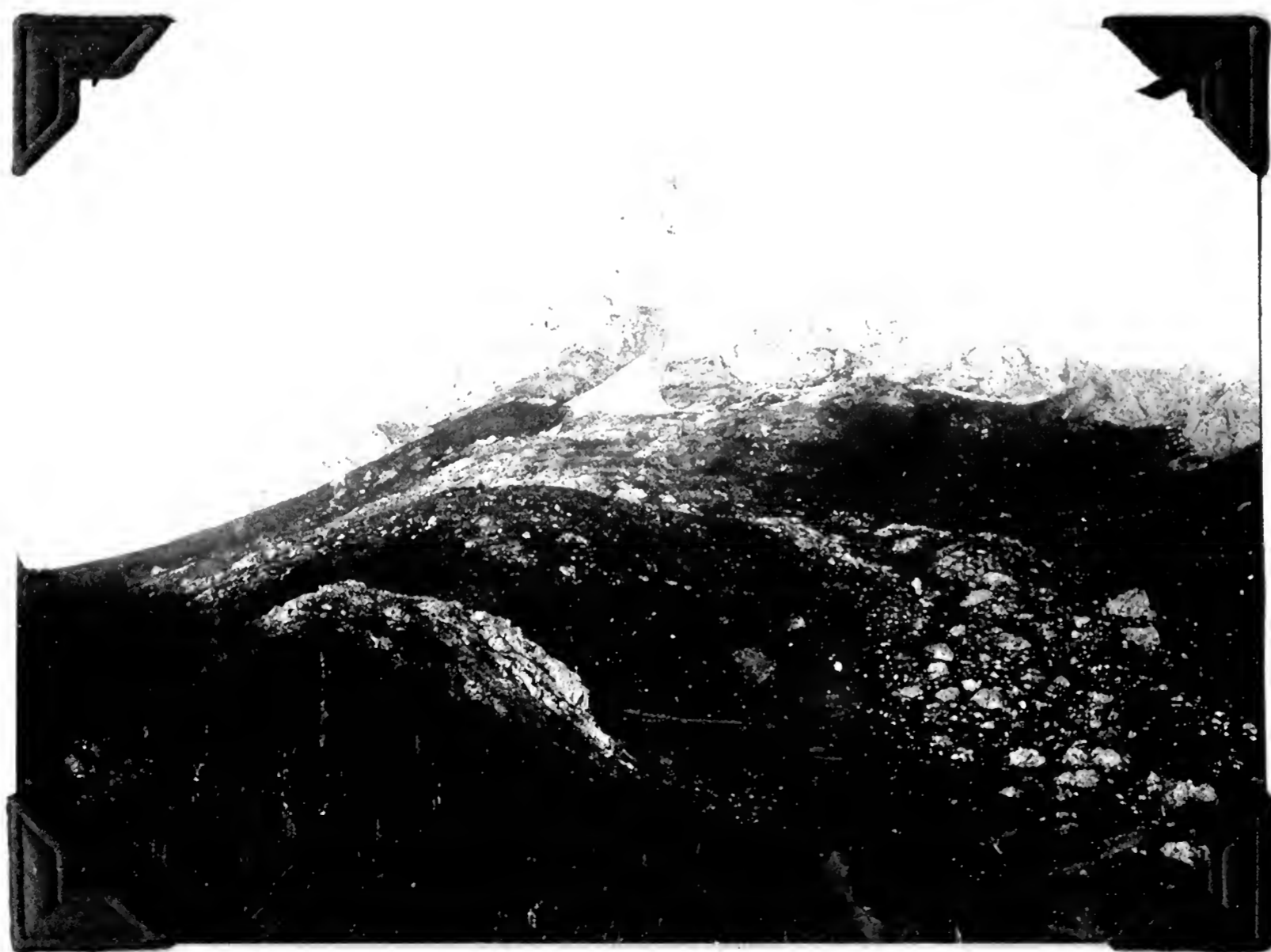




2004. Pollarded forest near
Riaño, León.
May 13, 1930.



2005. Pollarded forest near,
Riaño, León.
May 13, 1930.



2006. Rocky peak near Riaño,
León. Haunt of choughs.
May 13, 1930.

2007. Peak near Riaño,
León.
May 13, 1930.



2008. Riaño, León with Sierra
de Ornas in distance.
May 13, 1930.

2009. A channel of the Río
Esla in the outskirts of Riaño.
May 13, 1930.





2010. Riaño, León and the
Río Esla.
May 13, 1930.



2011. Valley of the Río
Esla above Riaño, León.
May 13, 1930.



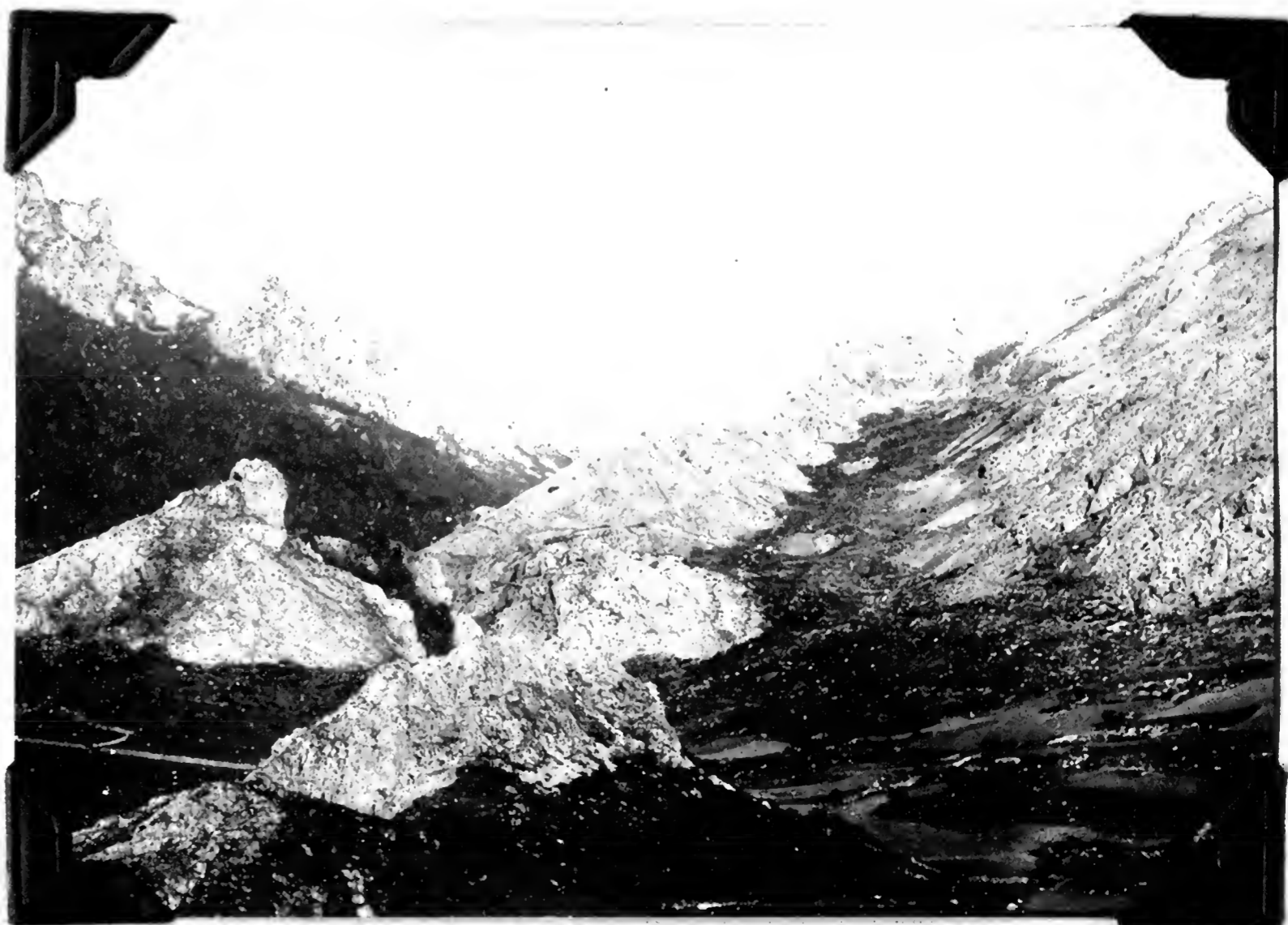
2012. Wooded valley near
Riaño, León.
May 13, 1930.

2013. Valley of the Río
Esla below Riaño, León.
May 16, 1930.



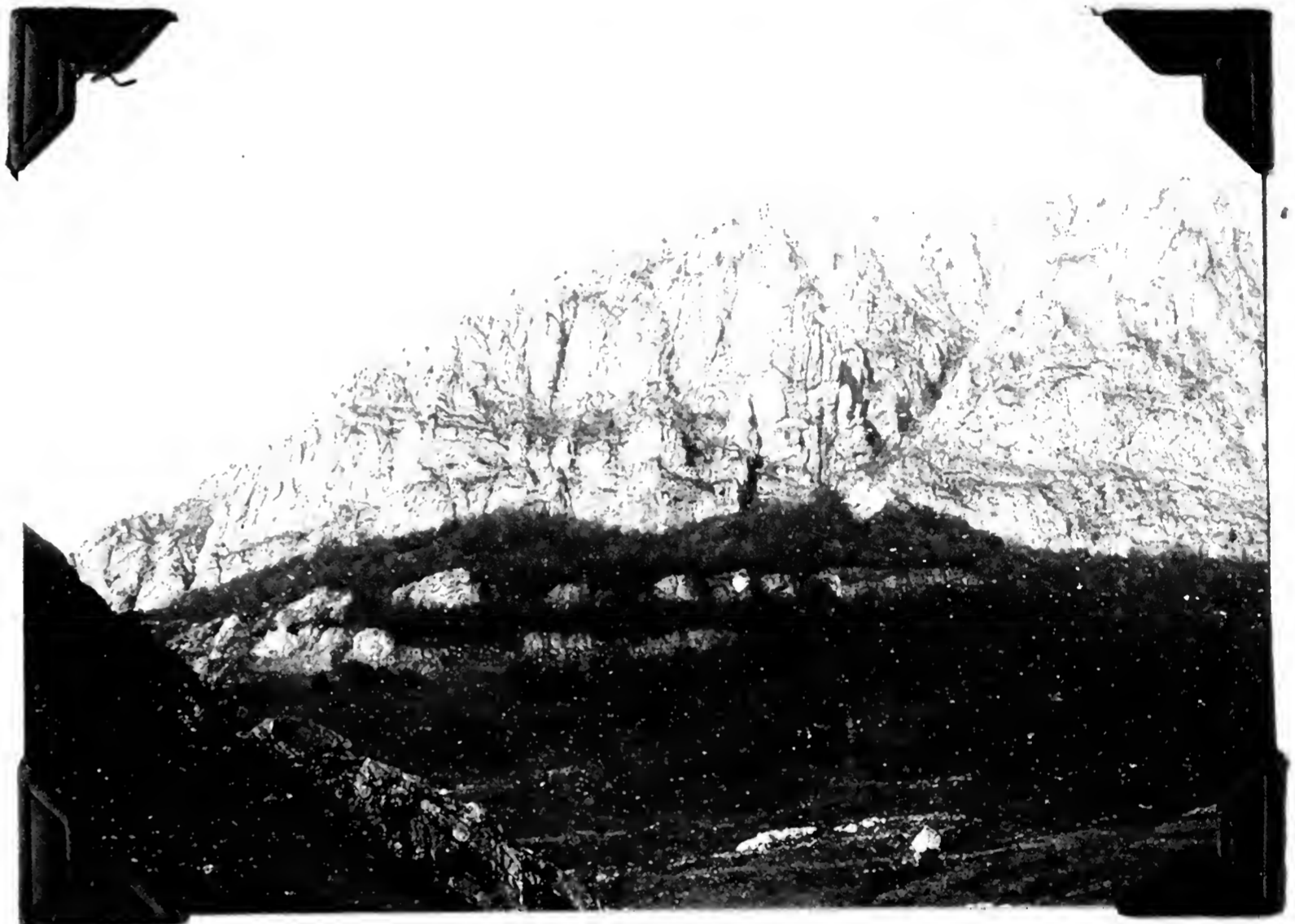
2014. Looking toward the
Collado de Tergueña near Riaño.
May 16, 1930.

2015. View in the rocky hills
near Riaño, León.
May 16, 1930.





2016. A rock exposure near
Riaño, León.
May 16, 1930.



2017. On the Collado de
Tergueña, near Riaño, León.
May 16, 1930.



2018. The Collado de
Tergueña, near Riaño, León.
May 16, 1930.

2019. The Collado de Tergueña
near Riaño, León.
May 16, 1930.



2020. The valley of the Río
Esla at Riaño, León, as seen
from the Collado de Tergueña.
May 16, 1930.

2021. View from the Collado
de Tergueña near Riaño, León.
May 16, 1930.





2022. Beech forest near
Riaño, Collado de Terguëña.
May 16, 1930.

2023. Beech forest in the Collado de
Terguëña, near Riaño, León.
May 16, 1930.



2024. Beech forest in the Collado de
Terguëña, near Riaño, León.
May 16, 1930.

2025. Río Yuso near
Riaño, León.
May 16, 1930.



2026. View in Riaño, León.
May 18, 1930.

2027. Storehouse for grain in
Riaño, León. Note flat stones
under corners to prevent climbing
rats from entering.
May 18, 1930.





2028. Storehouse for grain
in Riaño, León.
May 18, 1930.

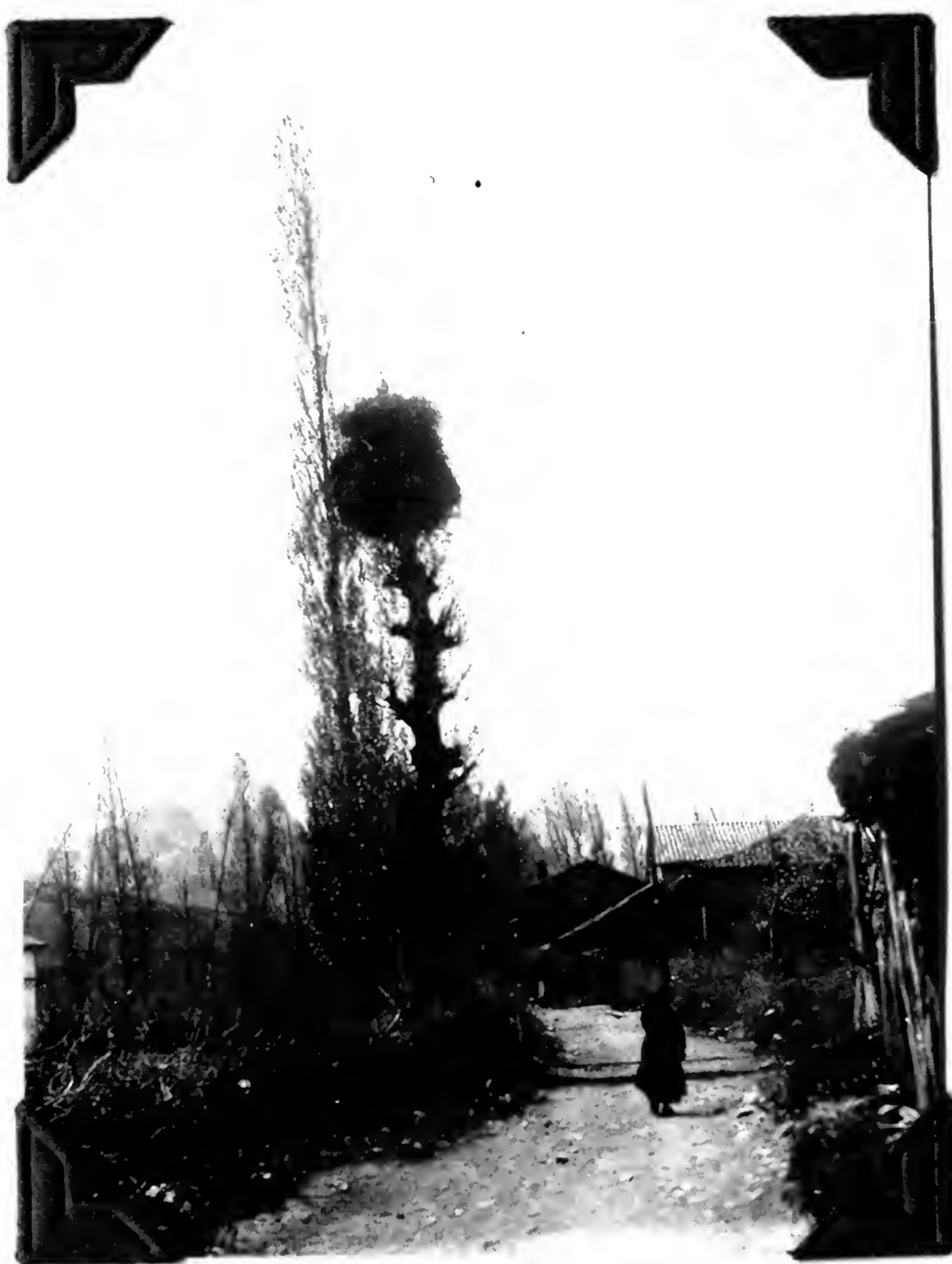


2029. Stork's nest on church,
La Puerta, near Riaño, León.
May 18, 1930.



2030. Stork's nest on church
near La Puerta, near Riaño,
León.
May 18, 1930.

2031. Stork's nest on church in La
Puerta, near Riaño, León.
May 18, 1930.



2032. Nest of stork in hamlet of La
Puerta, near Riaño, León.
May 18, 1930.



2033. Nest of stork in little village
of La Puerta, near Riaño, León.
May 18, 1930.



2034. Entrance to the little village of La Puerta, near Riaño, León, Sierra de Orneas in distance.

May 18, 1930.



2035. Junction of the Río Yuso with the Río Esla, near Riaño, León.

May 18, 1930.



2036. Morning fog in the Puerto del Ponton, above Riaño, León.

May 20, 1930.

2037. Sierra del Ponton,
near Riaño, León.
May 20, 1930.



2038. Sierra del Ponton,
near Riaño, León.
May 20, 1930.

2039. Looking toward the
Picos de Europa, from the
Sierra del Ponton.
May 20, 1930.





2040. Sierra del Ponton.
May 20, 1930.



2041. Sierra del Ponton.
May 20, 1930.



2042. View down the Puerto
del Ponton on the road from
Riaño to Cangas de Onis.
May 20, 1930.

2043. Sierra del Ponton.
May 20, 1930.



2044. Sierra del Ponton.
May 20, 1930.

2045. Sierra del Ponton.
May 20, 1930.





2046. Sierra del Ponton.
May 20, 1930.



2047. Looking toward the
Picos de Europa from the
Sierra del Ponton.
May 20, 1930.



2048. Picos de Europa from
Sierra del Ponton.
May 20, 1930.



78. Texel Island,
Holland. June 5, 1930.
Seventh International
Ornithological Congress.



79. Texel Island,
Holland. June 5, 1930.
Seventh International
Ornithological Congress.



80. Lunch on Texel
Island, Holland. June
5, 1930. Seventh Inter-
national Ornithological
Congress.

81. Texel Island,
Holland. June 5, 1930.
Einer Lönberg.



83. Dr. & Mrs. A. Lansborough
Thomson. Texel Island, Holland.
June 5, 1930.

82. Texel Island,
Holland. June 5, 1930.
Nils Gyldenstolpe & Einar
Lönberg in center.





84. Count Nils
Gyldenstolpe & Prof. Einar
Lönnerberg. Holland - en
route to Texel Id., June 5,
1930.

86. H. F. Witherby. June
10, 1930. Fawley, England.



85. Dr. & Mrs. A.
Laubmann. June 5, 1930.
En route to Texel Island,
Holland.

88. Lord Rothschild's
Museum at Tring, Herts.,
England. June 15, 1930.



87. Mr. & Mrs. H. F. Witherby,
Fawley, England. June 10, 1930.

89. Lord Rothschild's
Museum at Tring, Herts.
England. June 15, 1930.





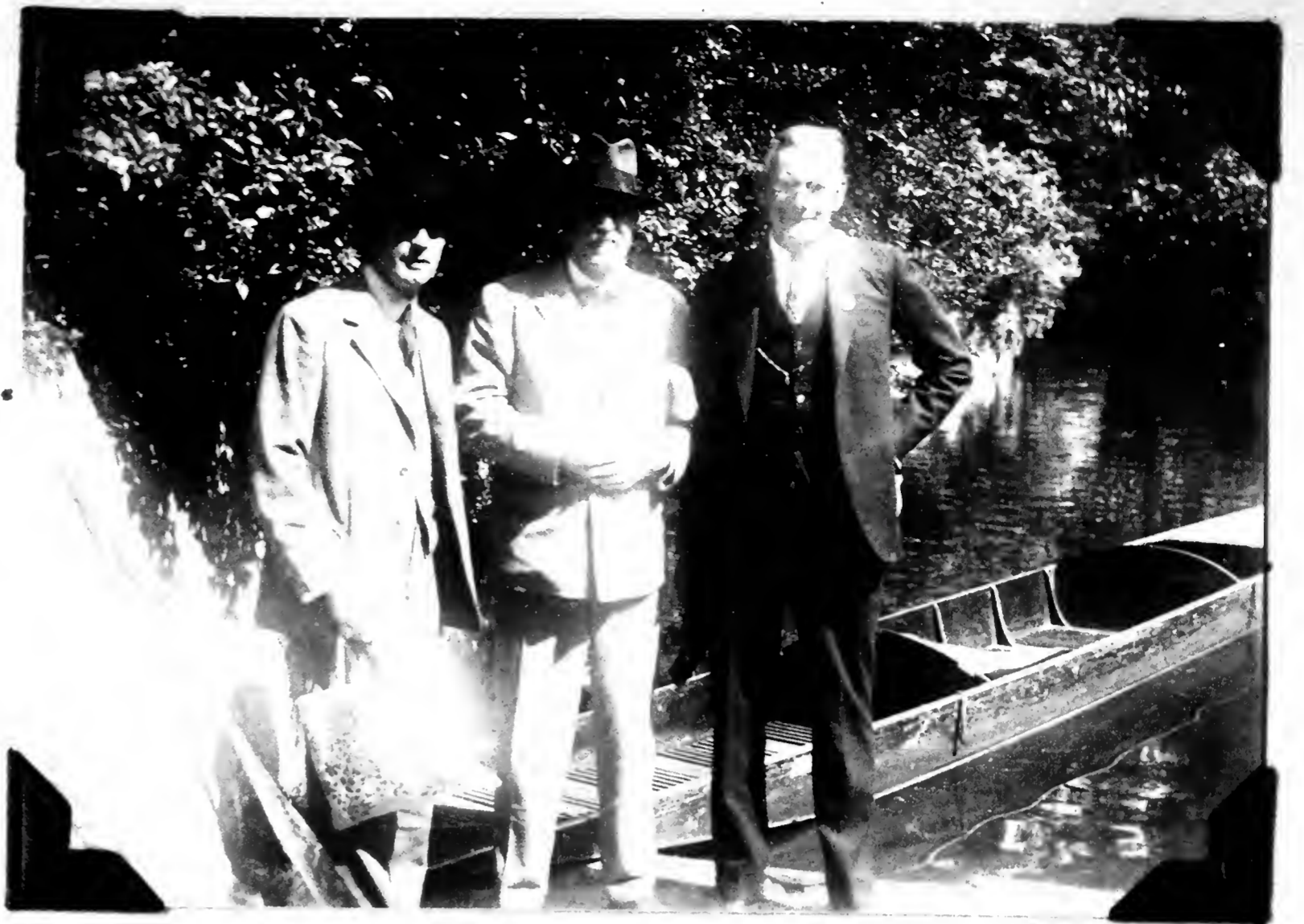
91. Norwich Castle
Museum. Norwich, England.
June 29, 1934.

90. Lord Rothschild's Museum
at Tring. Herts., England.
June 15, 1930.



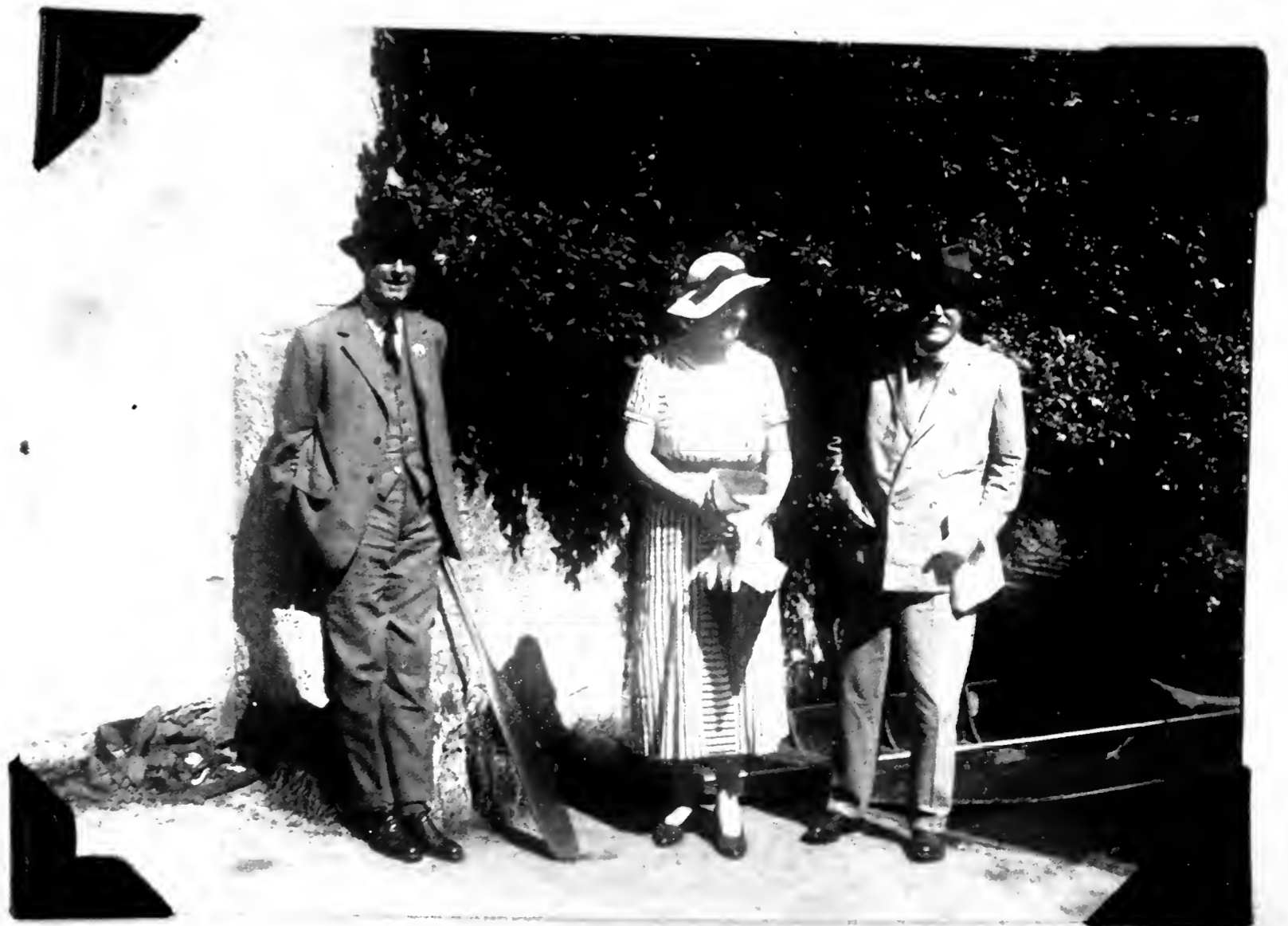
92. Norwich Castle
Museum. Cattle Market
in foreground. Norwich,
England. June 29, 1934.

93. A. punting party
on River Cherwell, Oxford,
England. Eighth Inter-
national Ornithological
Congress. July 5, 1934.
Percy Lowe, W. L. Sclater.
A. Wetmore.



95. E. Stresemann,
J. H. Fleming, W. H.
Witherby. The three
Presidents. Eighth In-
ternational Ornithological
Congress. Oxford, England.
July 6, 1934.

94. Percy Lowe, Mrs.
Lowe, W. L. Sclater, Oxford,
England. July 5, 1934.





96. The Eighth International Ornithological Congress embarks for an excursion. Oxford, England. July 7, 1934.

97. B. W. Tucker, Oxford, England. July 7, 1934.



98. Rolbright stones, near Woodstock, England. July 7, 1934.

99. Rolbright stones
near Woodstock, England.
July 7, 1934.



100. L. Griscom, W.
B. Alexander, en route
for Wales, July 7, 1934.

101. A. Wetmore, W. B.
Alexander. Erwood, Wales.
July 8, 1934.





102. H. F. Witherby's
Gracious Pond Farm.
Chobham, England. July 11,
1934.

104. Mr. & Mrs. W. H. Witherby,
Gracious Pond Farm, Chobham,
Surrey, England. July 10, 1934.



103. H. F. Witherby's
Gracious Pond Farm. Chobham,
England. July 11, 1934.



463. Chateau Clères,
France. May 11, 1938.



464. At Chateau Clères,
France. May 11, 1938.



465. A. Wetmore, J. H.
Fleming, Chateau Clères,
France. May 11, 1938.

466. J. H. Fleming,
Danis, A. Van Rossem.
Chateau Clères, France.
May 11, 1938.



467. G. Olivier, at Chateau
Clères, France. May 11, 1938.

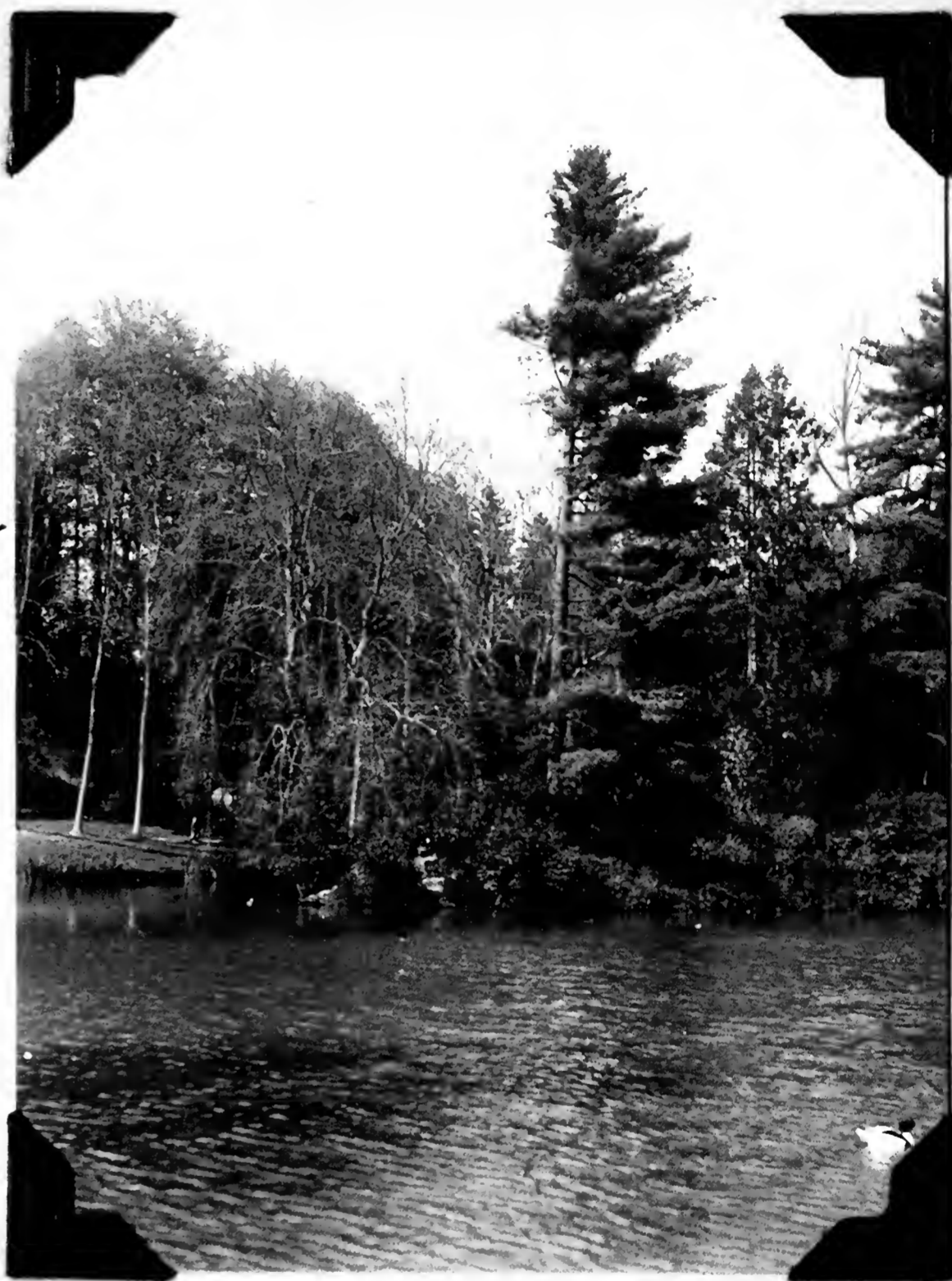
468. V. Danis at left, ,
J. H. Fleming, A. Van
Rossem in Center. Chateau
Clères, France. May 12, 1938





470. Lawrence Hicks at right. Chateau Clères, France. May 11, 1938.

469. Pond and woodland at Chateau Clères, France. May 11, 1938.



471. A. Van Rossem and the aviaries at Chateau Clères, France. May 11, 1938.

473. Left to right -
Col. Meinertzhagen and Percy
Lowe in center. J. H.
Fleming at end. Chateau
Clères, France. May 11, 1938.



472. A Van Rossem and the aviaries
at Chateau Clères, France. May 11,
1938.

474. J. H. Fleming
and Mr. & Mrs. Harry Witherby.
Chateau Clères, France. May
11, 1938.





476. Group at Abbey
of Jumiege, France. Mrs.
Beyer - Stresemann in
center. May 12, 1938.

475. The Ninth International
Ornithological Congress at Jumiege
Abbey, France. May 12, 1938.



477. A. Ezra and J.
Delacour. Caudebec-en-
Caux, France. May 12,
1938.



479. J. Delacour, Olivier
(with back turned) E. Strese-
mann. Forest of Brotonne,
France. May 12, 1938.



478. Caudebec en Caux, France.
Hans Moll, Erwin Stresemann. May
12, 1938.

480. The stony plain of
Le Crau near Arles, France.
Home of sand grouse and larks.
May 18, 1938.





481. The stone-strewn
plain Le Crau near Arles,
France. May 18, 1938.



482. Near Mouries,
France. May 18, 1938.



483. Near Mouries, France.
Home of Sardinian Warbler.
May 18, 1938.

484. Hills near Mouries,
France. May 18, 1938.



485. Near Mouries,
France. May 18, 1938.

486. Miss Judith Ferrier,
Mrs. Humphry Gilbert (behind)
Humphrey Gilbert. Mouries,
France. May 18, 1938.





487. Our luncheon party
near Mouries, France. Mrs.
Gilbert, Miss Ferrier, Guy
Charteris, Humphrey Gilbert.
May 18, 1938.

488. The castle and
town at Les Baux, France.
M ay, 18, 1938.



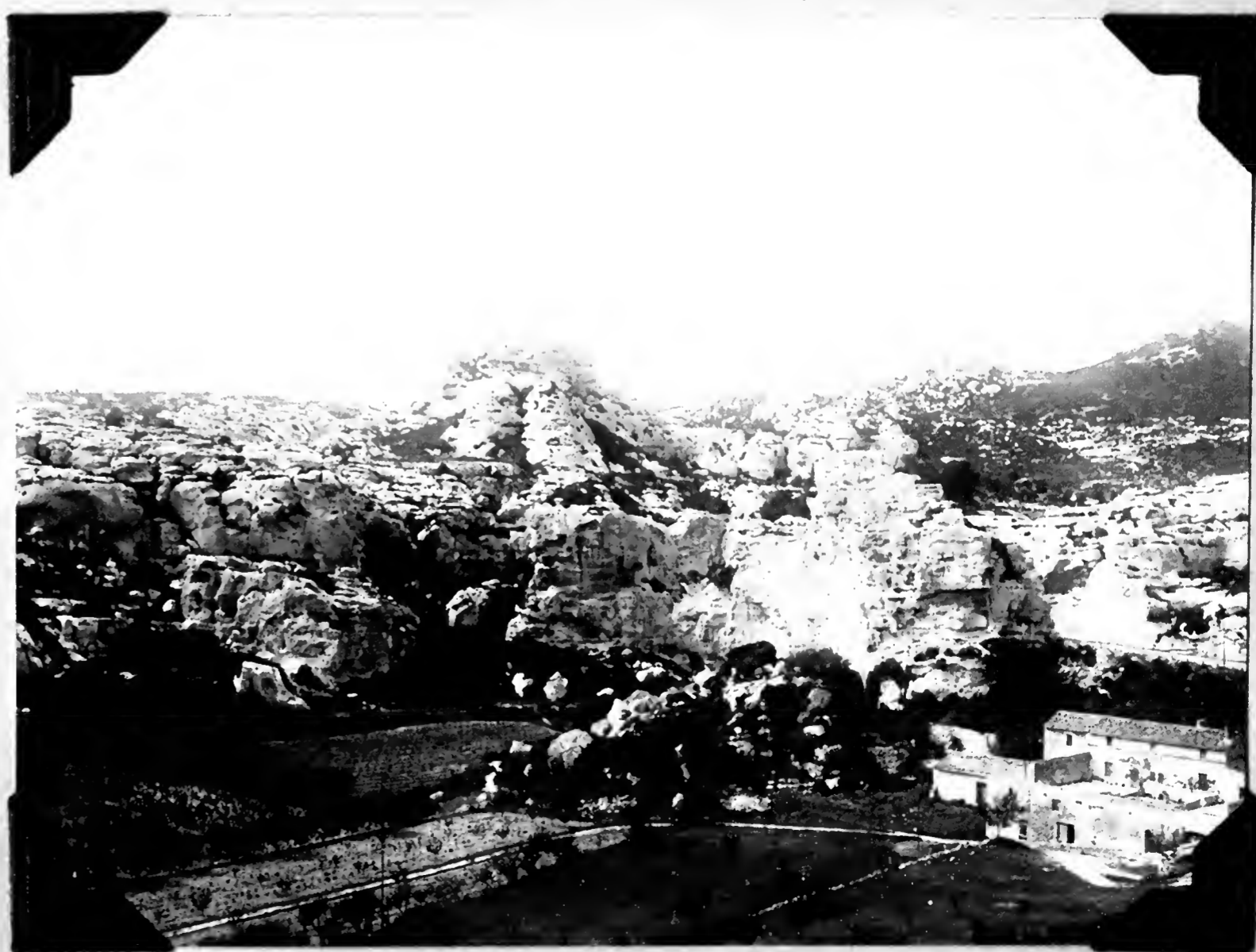
489. Castle and town at
Les Baux, France. May 18,
1938.

490. The castle and town at Les Baux, France. May 18, 1938.



491. Hills near Les Baux, France. May 18, 1938.

492. Hills near Les Baux, France. May 18, 1938.





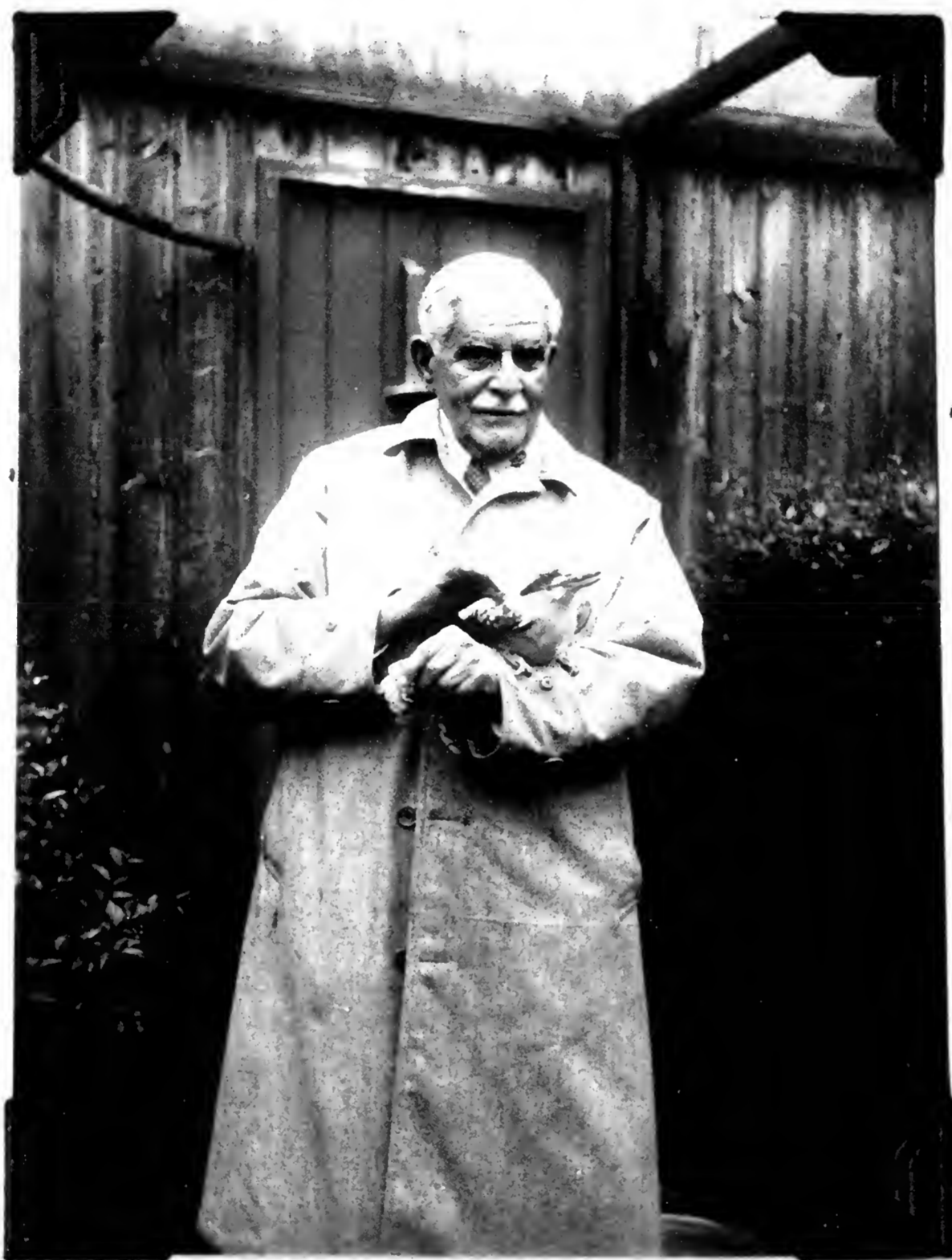
493. Group at Les Baux,
France. May 18, 1938.

494. Humphrey Gilbert, Les
Baux, France. May 18, 1938.



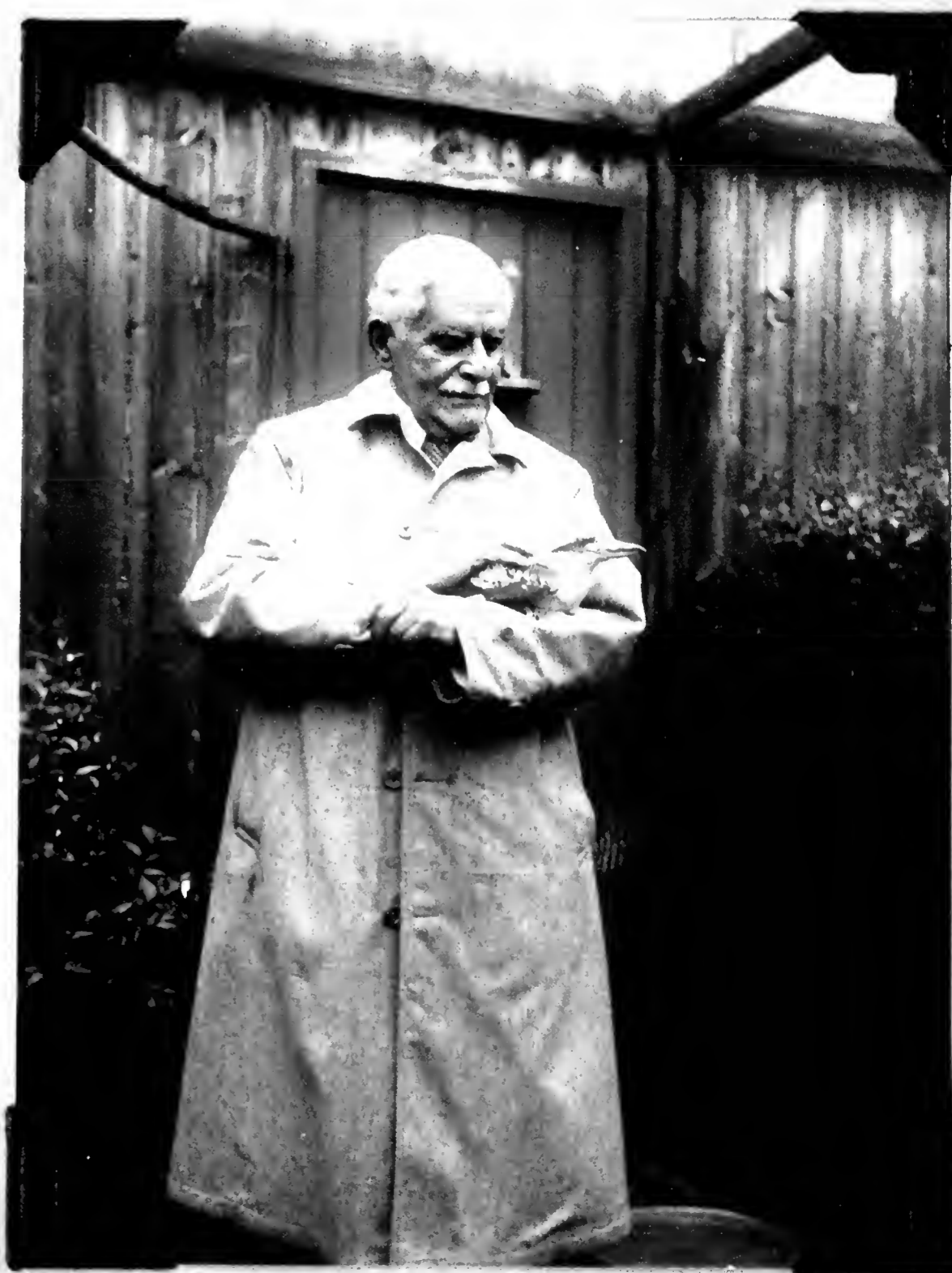
495. Humphrey Gilbert with
cane. Mrs. Gilbert, Miss
Judith Ferrier, Beyond Guy
Charteris. Le Baux, France.
May 18, 1938.

496. Miss Judith Ferrier,
Arthur Allen, Lawrence Hicks,
in distance, Les Baux, France.
May 18, 1938.



497. A. Ezra with tame Kookaburra.
Foxwarren, England. May 29, 1938.

498. A. Ezra with tame Kookaburra.
Foxwarren, England. May 29, 1938.





499. At Foxwarren, England.
May 29, 1938.

Left to Right. Mrs. Bannerman,
a lady, David Bannerman, A. Ezra,
Sir David Ezra.

500. A part of the
aviaries at Foxwarren,
England. May 27, 1938.



501. A part of Ezra's
aviaries at Foxwarren, England.
May 29, 1938.

502. Aviaries at Fox-
warren, England.
May 29, 1938.



503. Aviaries at Fox-
warren, England.
May 29, 1938.

504. Aviaries at Fox-
warren, England.
May 29, 1938.





505. Aviaries at Fox-warren, England.
May 29, 1938.



507. Aviaries at Fox-warren, England.
May 29, 1938.



506. Aviaries at Fox-warren, England.
May 29, 1938.

508. Gregory Mathews
Winchester, England.
May 31, 1938.



509. Gregory Mathews,
Winchester, England.
May 31, 1938.

